

CLEARED AREA CALCULATION:
 Area within Gateway South Zoning District:
 17.59 acres
 Proposed Cleared Area
 6.47 acres
 Percentage Cleared Area = 6.47/17.59 = 38.5%
 A minimum of 0.31 acres will be re-vegetated to achieve
 maximum of 35% cleared area. Refer to Landscape plans.

**SMITH
 ALVAREZ
 SIENKIEWYCZ**
 ARCHITECTS

117 St. Paul Street
 3rd Floor
 Burlington, VT
 05401

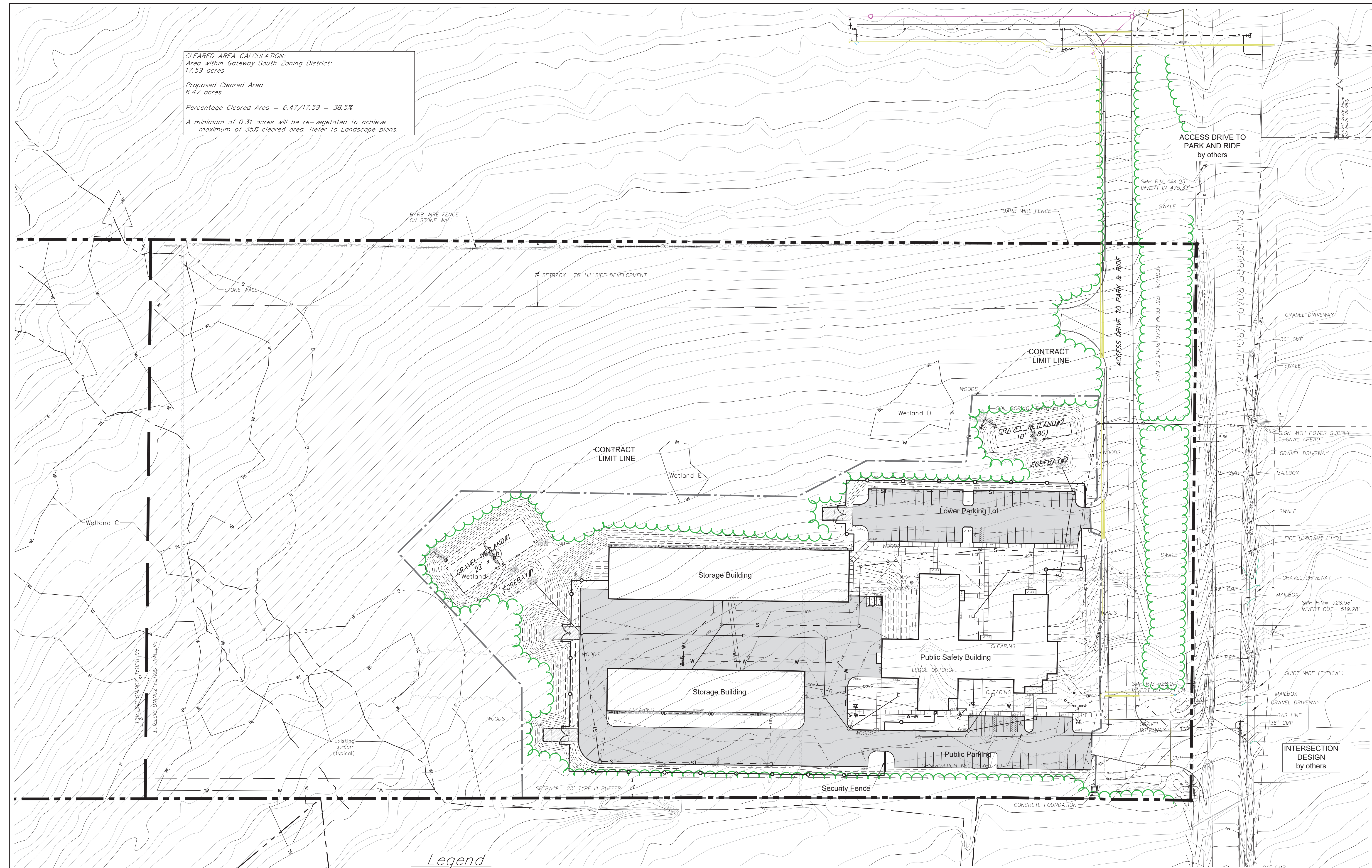
P: 802-863-2227
 F: 802-863-0093

CONSULTANTS
CIVIL
 KREBS & LANSING
 164 MAIN ST.
 COLCHESTER, VT 05446
 P: 802-878-0375 F: 802-878-9618
LANDSCAPE
 DISTINCTIVE LANDSCAPING
 211 GREENBUSH ROAD
 CHARLOTTE, VT 05445
 P: 802-425-2877 F: 802-425-2797
STRUCTURAL
 ENGINEERING VENTURES, PC
 208 FLYNN AVENUE, SUITE 2A
 BURLINGTON, VT 05401
 P: 802-863-6225 F: 802-463-6306
**MECHANICAL/
 ELECTRICAL**
 LN CONSULTING ENGINEERS
 PO BOX 65178
 BURLINGTON, VT 05406-5178
 P: 802-655-1753 F: 802-655-7628
 K&L PROJECT NO. 18193

PROJECT
**WILLISTON PUBLIC
 SAFETY FACILITY**
 SAINT GEORGE ROAD
 ROUTE 2A
 WILLISTON, VT
 DATE: DECEMBER 18, 2019
 SCALE: 1" = 50'
 DRAWN: SWH
 CHECKED:

REVISIONS
DESIGN DEVELOPMENT
**OVERALL
 SITE PLAN**

C-1



STONE WALL

BARB WIRE FENCE
 ON STONE WALL

75' SETBACK= 75' HILLSIDE-DEVELOPMENT

BARB WIRE FENCE

ACCESS DRIVE TO
 PARK AND RIDE
 by others

SMH RIM 484.03'
 INVERT IN 475.33'

SWALE

SAINT GEORGE ROAD - (ROUTE 2A)

CONTRACT LIMIT LINE

ACCESS DRIVE TO PARK & RIDE
 by others

SETOBACK= 75' FROM ROAD RIGHT OF WAY

GRAVEL DRIVEWAY

36" CMP

SWALE

GRAVEL DRIVEWAY

MAILBOX

SWALE

FIRE HYDRANT (HYD)

GRAVEL DRIVEWAY

MAILBOX

SMH RIM= 528.58'
 INVERT OUT= 519.28'

GUIDE WIRE (TYPICAL)

MAILBOX

GRAVEL DRIVEWAY

GAS LINE

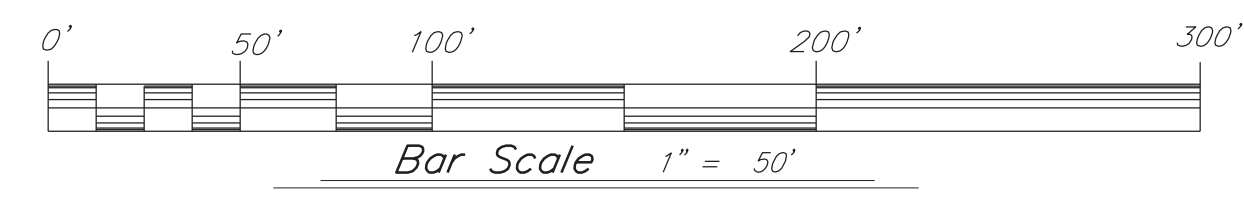
36" CMP

INTERSECTION
 DESIGN
 by others

CONCRETE FOUNDATION

Legend

- | | | | | | | | |
|-------|------------------------------------|-----|-----------------------------------|-----|--------------------------------|--------|--------------------------------------|
| -g- | Existing Gas Line | -s- | Existing Sewer Line/Manhole | -x- | Existing Stone Wall | -G- | New Gas Line/Valve |
| -sl- | Existing Storm Line | -x- | Existing Barbed Wire Fence | -x- | Pre-construction Excavation | -S- | New Sewer Line/Manhole |
| -ohp- | Existing Overhead Power/Power Pole | -x- | Finish Grade Spot Grade Elevation | -x- | Finish Grade Direction of Flow | -ST- | New Storm Line/Manhole/Basin |
| -w- | Existing Stream | -x- | Finish Grade Major Contour | -x- | Finish Grade Minor Contour | -W- | New Water Line/Hydrant/Valve/Shutoff |
| -wl- | Existing Wetland | -x- | Finish Grade Direction of Flow | -x- | Finish Grade Minor Contour | -UGP- | New Underground Power |
| -b- | Existing Wetland Buffer | -x- | Finish Grade Major Contour | -x- | Finish Grade Minor Contour | -COMM- | New Underground Communications Line |
| -t- | Existing Tree Line | -x- | Finish Grade Minor Contour | -x- | Finish Grade Minor Contour | -w- | New Clearing Limits |
| -w- | Existing Water Line/Hydrant | -x- | Finish Grade Minor Contour | -x- | Finish Grade Minor Contour | -o- | New Security Fence |
| -p- | Approximate Property Line | -x- | Finish Grade Minor Contour | -x- | Finish Grade Minor Contour | | |



Notes:
 1. This plan is not a boundary survey. The property lines shown are based on a plan provided by Trudell Consulting Engineers and are considered approximate.
 2. The underground utilities shown on this plan are based on a plan provided by Trudell Consulting Engineers. Underground utilities are approximate and not warranted to be exact or complete. Dig Safe shall be contacted prior to any excavation.

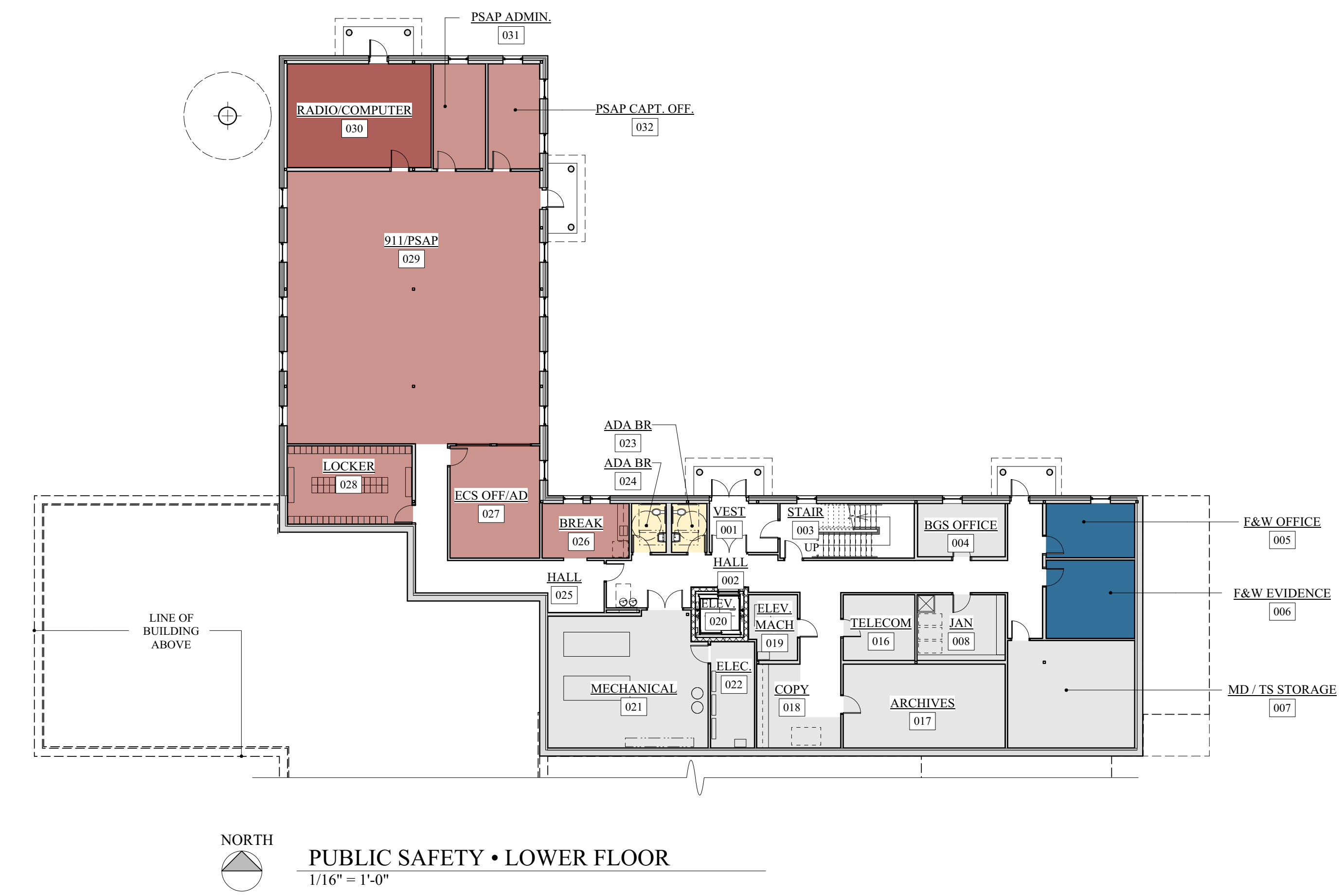
PARCEL ID# 12103-049000

18193/WPS-Site.dwg

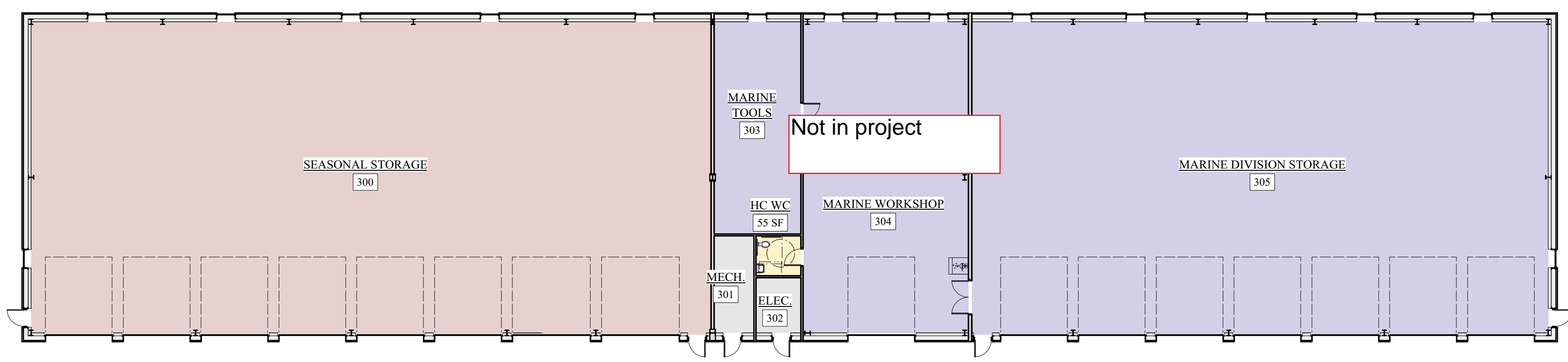
FIELD FORCE, UNIFORM DIVISION, STATE POLICE	4,423 SF
TRAFFIC SAFETY UNIT STATE POLICE	383 SF
MARINE DIVISION STATE POLICE	411 SF
RADIO/COMPUTER	440 SF
PUBLIC SAFETY ANSWERING POINT STATE POLICE	3,066 SF
NORTHERN VERMONT DRUG TASK FORCE	397 SF
BUREAU OF CRIMINAL INVESTIGATION	2,172 SF
FISH AND WILD LIFE ENFORCEMENT	345 SF
GENERAL BUILDING AREAS	2,438 SF
UTILITY SPACE	2,244 SF
WILLISTON PS TOTAL NET	= 16,319 SF
CIRCULATION	3,734 SF
WALLS	2,825 SF
UPPER GROSS	= 14,259 SF
LOWER GROSS	= 8,619 SF
WILLISTON PS TOTAL GROSS	= 25,915 SF

COLD STORAGE	6,888 SF
MARINE DIVISION - MARINE STORAGE	8,100 SF
GENERAL BUILDING AREAS	58 SF
UTILITY SPACE	206 SF
WILLISTON GARAGE 1 NET	= 15,252 SF
WALLS	1,102 SF
WILLISTON GARAGE 1 GROSS	= 16,354 SF

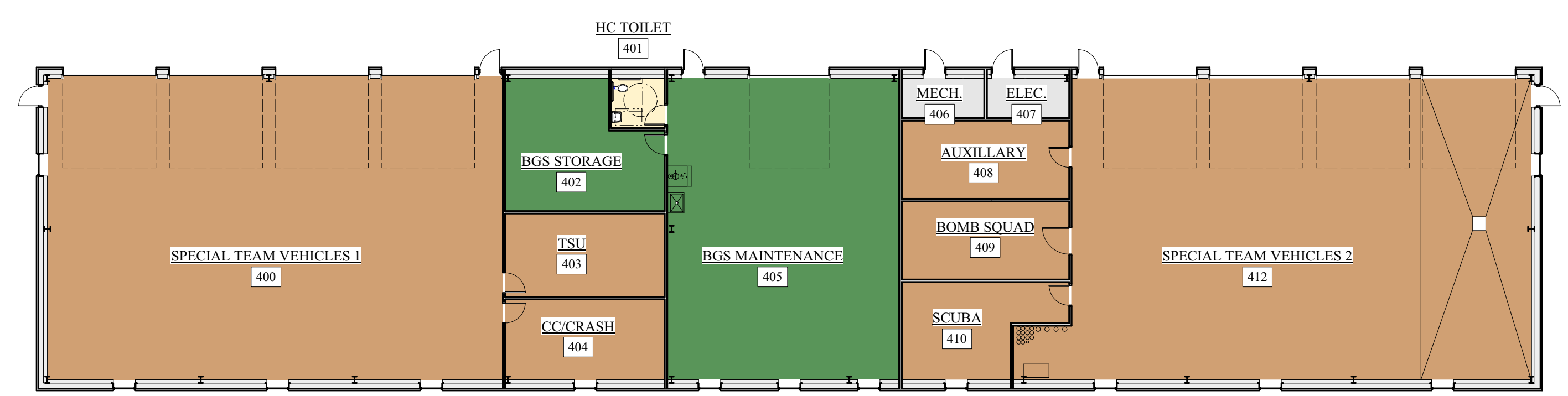
SPECIAL TEAM VEHICLES	7,832 SF
BUILDING GENERAL SERVICES (BGS)	2,000 SF
GENERAL BUILDING AREAS	60 SF
UTILITY SPACE	148 SF
WALLS	982 SF
WILLISTON GARAGE 2 NET	= 10,040 SF
WILLISTON GARAGE 2 GROSS	= 11,022 SF



NORTH
PUBLIC SAFETY • LOWER FLOOR
1/16" = 1'-0"



COLD STORAGE • GARAGE 1
COLD STORAGE GARAGE 1 • MARINE DIVISION



CLIMATE CONTROLLED GARAGE 2 • SPECIAL TEAM VEHICLES



NORTH
PUBLIC SAFETY • UPPER FLOOR
1/16" = 1'-0"

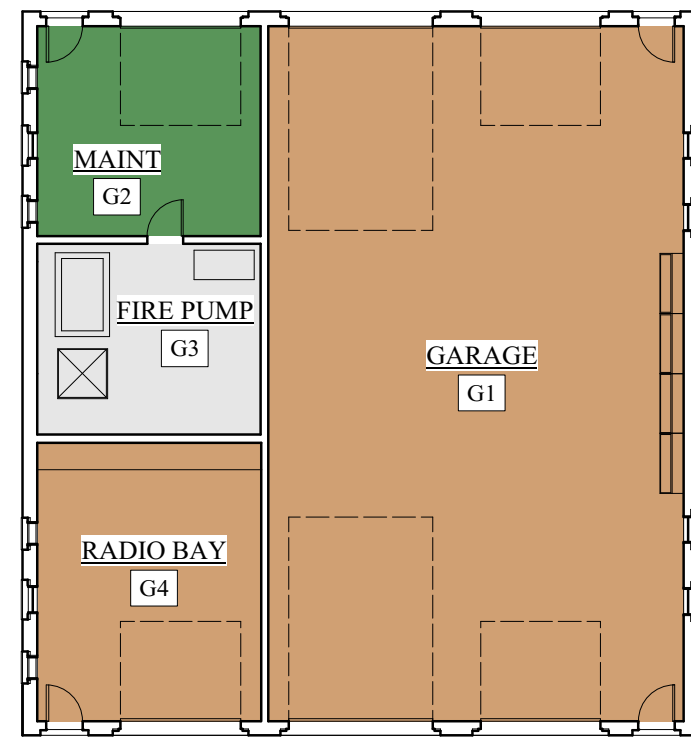
SMITH
ALVAREZ
SIENKIEWYCZ
ARCHITECTS
117 St. Paul Street
3rd Floor
Burlington, VT
05401

P: 802 • 863 • 2227
F: 802 • 863 • 0093

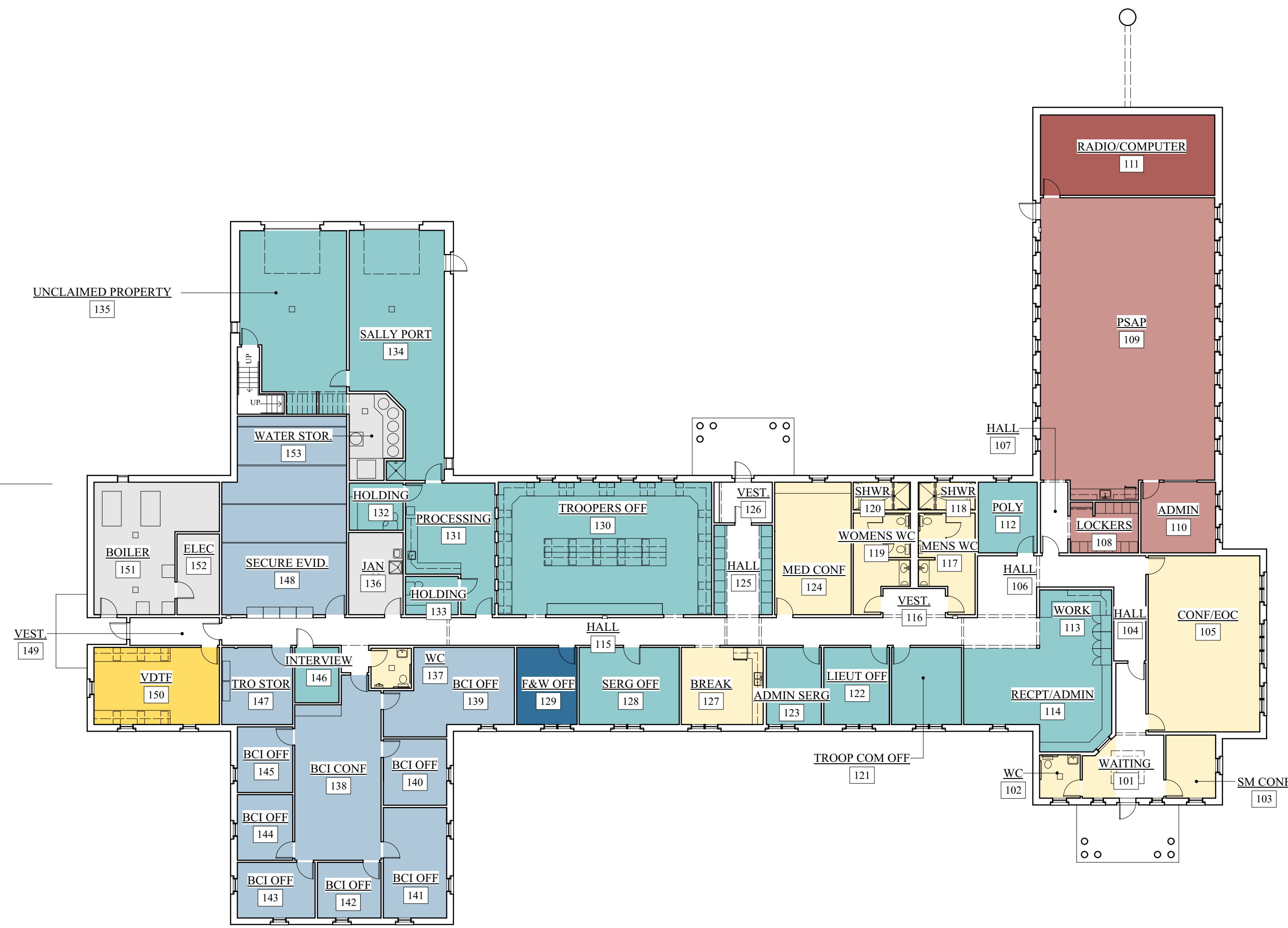
PROJECT
WILLISTON
PUBLIC SAFETY
FACILITY
SAINT GEORGE ROAD
ROUTE 2A
WILLISTON, VT

DATE: FEBRUARY 5, 2021
SCALE: 1/16"=1'-0"

WILLISTON PUBLIC
SAFETY
UPPER AND LOWER
FLOOR PLANS AND
GARAGE PLANS



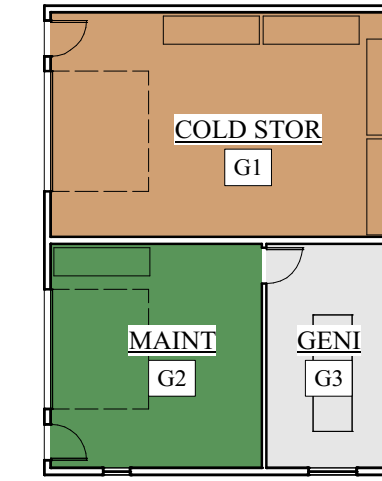
WESTMINSTER GARAGE • FLOOR PLAN
1/16" = 1'-0"
NORTH



FIELD FORCE, UNIFORM DIVISION, STATE POLICE	4,192 SF
TRAFFIC SAFETY UNIT STATE POLICE	0 SF
MARINE DIVISION STATE POLICE	0 SF
RADIO/COMPUTER	460 SF
PUBLIC SAFETY ANSWERING POINT STATE POLICE	1,948 SF
NORTHERN VERMONT DRUG TASK FORCE	317 SF
BUREAU OF CRIMINAL INVESTIGATION	2,607 SF
FISH AND WILD LIFE ENFORCEMENT	152 SF
GENERAL BUILDING AREAS	1,891 SF
UTILITY SPACE	820 SF
WESTMINSTER PS TOTAL NET	= 12,387 SF
CIRCULATION	1,690 SF
WALLS	1,706 SF
WESTMINSTER PS TOTAL GROSS	= 15,783 SF

VEHICLE STORAGE	2,436 SF
BUILDING GENERAL SERVICES (BGS)	325 SF
UTILITY SPACE	296 SF
WESTMINSTER GARAGE NET	= 3,057 SF
WALLS	342 SF
WESTMINSTER GARAGE GROSS	= 3,399 SF

WESTMINSTER PUBLIC SAFETY • FLOOR PLAN
1/16" = 1'-0"
NORTH



ST. ALBANS GARAGE • FLOOR PLAN
1/16" = 1'-0"
NORTH



ST. ALBANS PUBLIC SAFETY • FLOOR PLAN
1/16" = 1'-0"
NORTH

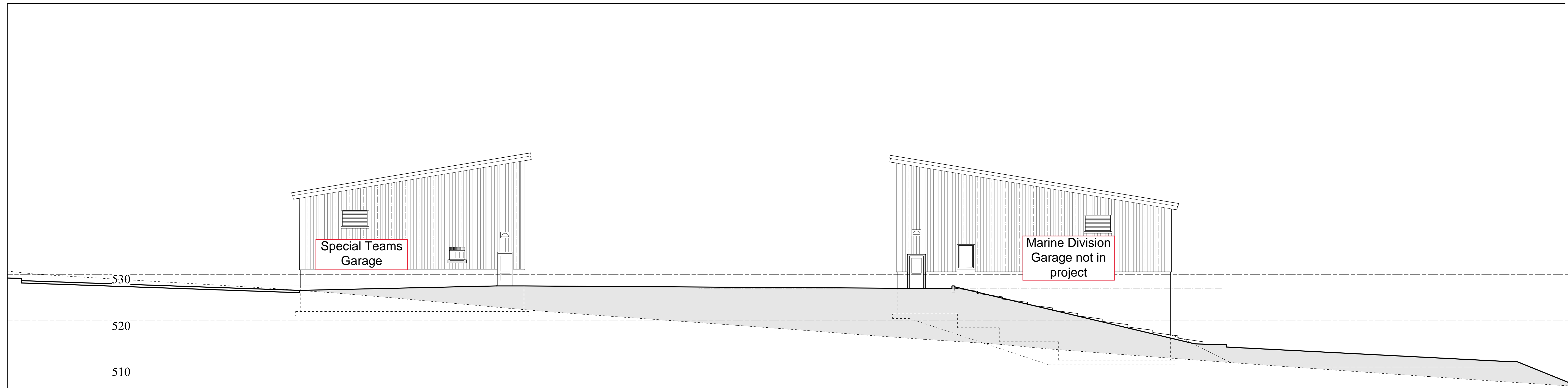
FIELD FORCE, UNIFORM DIVISION, STATE POLICE	4,154 SF
TRAFFIC SAFETY UNIT STATE POLICE	0 SF
MARINE DIVISION STATE POLICE	0 SF
RADIO/COMPUTER	472 SF
PUBLIC SAFETY ANSWERING POINT STATE POLICE	0 SF
NORTHERN VERMONT DRUG TASK FORCE	0 SF
BUREAU OF CRIMINAL INVESTIGATION	972 SF
FISH AND WILD LIFE ENFORCEMENT	152 SF
GENERAL BUILDING AREAS	1,774 SF
UTILITY SPACE	656 SF
ST. ALBANS PS TOTAL NET	= 8,180 SF
CIRCULATION	1,454 SF
WALLS	923 SF
ST. ALBANS PS TOTAL GROSS	= 10,557 SF

VEHICLE STORAGE	542 SF
BUILDING GENERAL SERVICES (BGS)	329 SF
UTILITY SPACE	206 SF
ST. ALBANS GARAGE NET	= 1,077 SF
WALLS	100 SF
ST. ALBANS GARAGE GROSS	= 1,177 SF

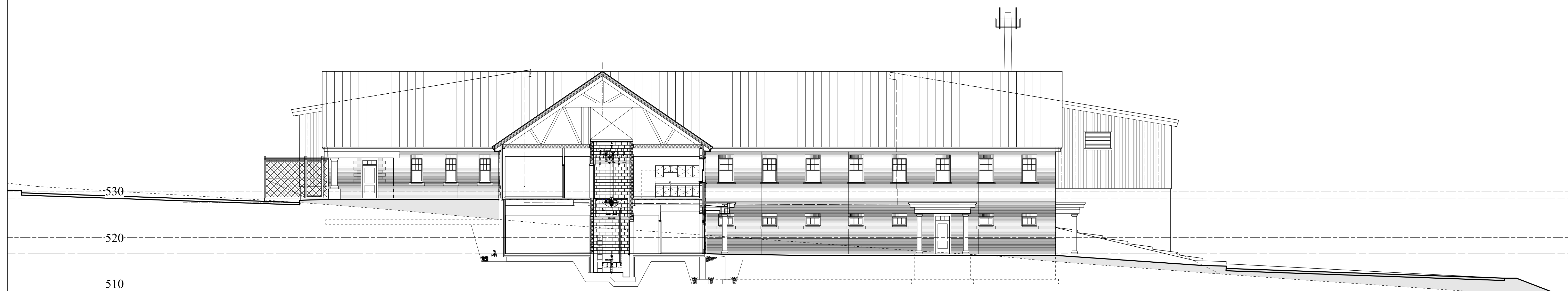
PROJECT
WESTMINSTER AND ST. ALBANS PUBLIC SAFETY FACILITY
DATE: FEBRUARY 5, 2021
SCALE: 1/16" = 1'-0"

WESTMINSTER FLOOR PLAN AND GARAGE PLAN

COPYRIGHT SMITH ALVAREZ SIENKIEWICZ ARCHITECTS, PC



SITE SECTION AT GARAGES
 3/32" = 1'-0"



SITE SECTION AT PUBLIC SAFETY BUILDING
 3/32" = 1'-0"

SMITH
 ALVAREZ
 SIENKIEWYCZ

ARCHITECTS
 117 St. Paul Street
 3rd Floor
 Burlington, VT
 05401

P: 802 • 863 • 2227
 F: 802 • 863 • 0093

PROJECT
 WILLISTON
 PUBLIC SAFETY
 FACILITY
 •
 SAINT GEORGE ROAD
 ROUTE 2A
 WILLISTON, VT

DATE: FEBRUARY 5, 2021
 SCALE: 1/16"=1'-0"

WILLISTON PUBLIC
 SAFETY
 BUILDING AND SITE
 SECTION W/ GARAGES
 BEYOND

A-3



AERIAL VIEW LOOKING NORTHEAST - ENTIRE COMPLEX



VIEW LOOKING SOUTHWEST - ENTIRE COMPLEX



VIEW LOOKING SOUTHEAST - PUBLIC SAFETY



VIEW LOOKING NORTHEAST - GARAGES

SMITH
ALVAREZ
SIENKIEWYCZ

ARCHITECTS

117 St. Paul Street
3rd Floor
Burlington, VT
05401

P: 802 • 863 • 2227
F: 802 • 863 • 0093

CONSULTANTS

CIVIL
KREBS & LANSING
164 MAIN ST.
COLCHESTER, VT 05446
P: 802-878-0375
F: 802-878-9618

STRUCTURAL
ENGINEERING VENTURES, PC
208 FLYNN AVENUE, SUITE 2A
BURLINGTON, VT 05401
P: 802-863-6225
F: 802-863-6306

**MECHANICAL/
ELECTRICAL**
LN CONSULTING ENGINEERS
PO BOX 65178
BURLINGTON, VT 05406-5178
P: 802-655-1753
F: 802-655-7628

SAS PROJECT NUMBER: 0921

PROJECT

WILLISTON PUBLIC
SAFETY FACILITY
SAINT GEORGE ROAD
ROUTE 2A
WILLISTON, VT

DATE: SEPTEMBER 14, 2018
SCALE: AS NOTED
CHECKED: MS
DRAWN BY: SAL, LMW

REVISIONS

SCHEMATIC DESIGN

3D IMAGES

SD-5.0

Williston Public Safety Barracks Project Cost Estimate

	2019 Design	2019 Design (Alt)
Total Project Cost	\$23,324,592	\$18,768,488
<u>Program</u>	Full program with Marine Division and Special Teams garages, the VIC, full size PSAP and large conference room, brick façade on the Main Building and insulated metal panels on the garages.	Main building and Special Teams Garage with metal siding. Delete the VIC, the northeast wing, and the Marine Garage. The sitework will be reduced with the deletion of the garage; however, it can be added in the future.
<u>Square Footage</u>		
Main Building	27,142 SF	25,915 SF
Special Teams Garage	11,022 SF	11,022 SF
Marine Garage	16,363 SF	-
Total Square Footage	54,527 SF	36,937 SF
<u>Project Cost</u>		
Land Cost	\$1,578,422	\$1,578,422
Design	\$4,800,493	\$4,800,493
Construction Cost	\$16,945,677	\$12,389,573
Total Building Cost	\$21,746,170	\$17,190,066
Total Project Cost	\$23,324,592	\$18,768,488
<u>Project Funding</u>		
Acts of 2016	\$250,000	\$250,000
Acts of 2017	\$1,927,000	\$1,927,000
Acts of 2018	\$5,573,000	\$5,573,000
Acts of 2020	\$5,400,000	\$5,400,000
Total Funding	\$13,150,000	\$13,150,000
Funding Shortfall	(\$10,174,592)	(\$5,618,488)
Capital Bill Request FY 2022		\$5,618,488

